



Thunder2 Storage-AV

Setup guide



For the latest version of this document, please download the PDF manual at <http://www.akitio.com/support/user-manuals>



Thunderbolt™ driver for Microsoft Windows
<http://www.akitio.com/support/software/thunderbolt-driver-windows>



E15-573M1AA001

PN: E15-573M1AA001
March 17, 2015 - v1.0



© 2015 by AKiTiO - All Rights Reserved

AKiTiO assumes no responsibility for any errors or differences between the product you may have and the one mentioned in this document and reserves the right to make changes in the specifications and/or design of this product without prior notice. The diagrams contained in this document are for reference and may not fully represent the real product. AKiTiO assumes no responsibility for any loss of data or files.

Front View & Rear View



LED indicator

Green: Power ON

Blue plus green: Thunderbolt link established



Thunderbolt™ port (20 Gbps)

HDMI

HDMI 1.4b compliant port

DC 12V

DC +12V/4A power receptacle

Thunderbolt and the Thunderbolt logo are trademarks of Intel Corporation in the U.S. and/or other countries.

1

Setup

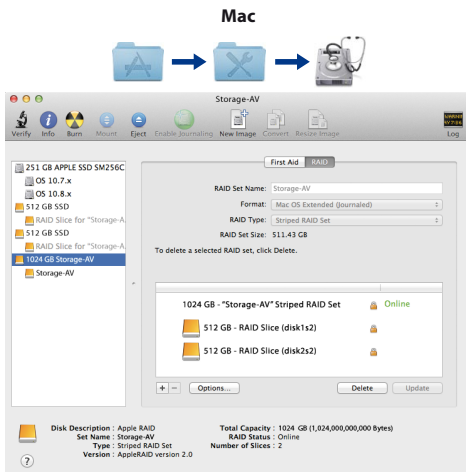


Turn on the computer, plug in the power adapter and connect the Thunderbolt cable to the computer.



IMPORTANT NOTICE!

This device will only turn on when the cable is connected and the computer is powered on.



The SSDs are setup as RAID 0 and have been pre-formatted with the HFS+ file system for use on the Mac.

To manage the RAID array, please use the disk utility on your Mac.

Windows

For Windows, a Thunderbolt certified device driver must be installed for the device to function properly.

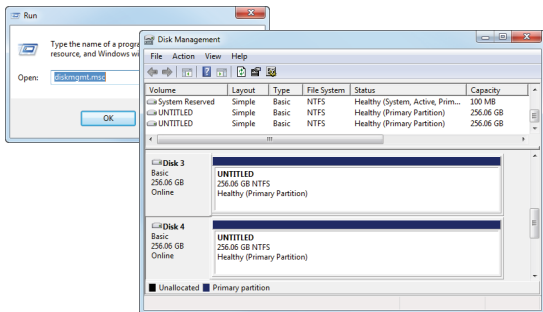


Thunderbolt driver for Windows 7 and Windows 8

<http://www.akitio.com/support/software/thunderbolt-driver-windows>

Please remove any existing partitions and create a new NTFS partition.

Start / Run... → diskmgmt.msc



Thunderbolt™ Daisy-Chain



Connect up to 6 Thunderbolt devices (storage and display).

The AKiTiO Thunder2 Storage-AV has to be turned on in order for the other devices in the daisy-chain to be recognized.



The HDMI output supports a maximum resolution of

- 3840 x 2160 at 30 Hz
- 4096 x 2160 at 24 Hz

When connecting a display via HDMI, you cannot connect a second display via Mini DisplayPort unless the second one is a Thunderbolt display.